



# Chemical and Tomography OVERVIEW



Software protected by



For all the functionalities and the possibilities check the  
Software Overview of the systems

# ACS AISLOGIC CHEMICAL SCANNER

## SCANNER FOR ANALYSIS OF SUBSTANCES AND COMPOUNDS

Chemical - Bacteriological - Physicists Pads - Tomography

*ACS Is a portable multi purpose chemical scanner that require no labs or special environment to be used . Analyzes can be made on any material, liquid, gaseous solid, even if not in contact*

USES Single or combine

Identification of elements constituting the compound with its parameters  
Identification of organic compounds and related parameters  
Bacteria identification with their parameters  
3D scanning - Tomography  
Analysis of internal structure of materials (porosity, cracks, internal discontinuities)  
Analysis of production processes (material behavioral surveys during processing)  
GPS integrate system  
Camera integrate system

*Water / Liquid  
Inspection*



*Chemical- Solid  
Inspection*



*Scan*



*Air  
Inspection*



*Data  
Via Antenna*



*Biological  
Identification*



*Measurers*



*Bacterial  
Identification*



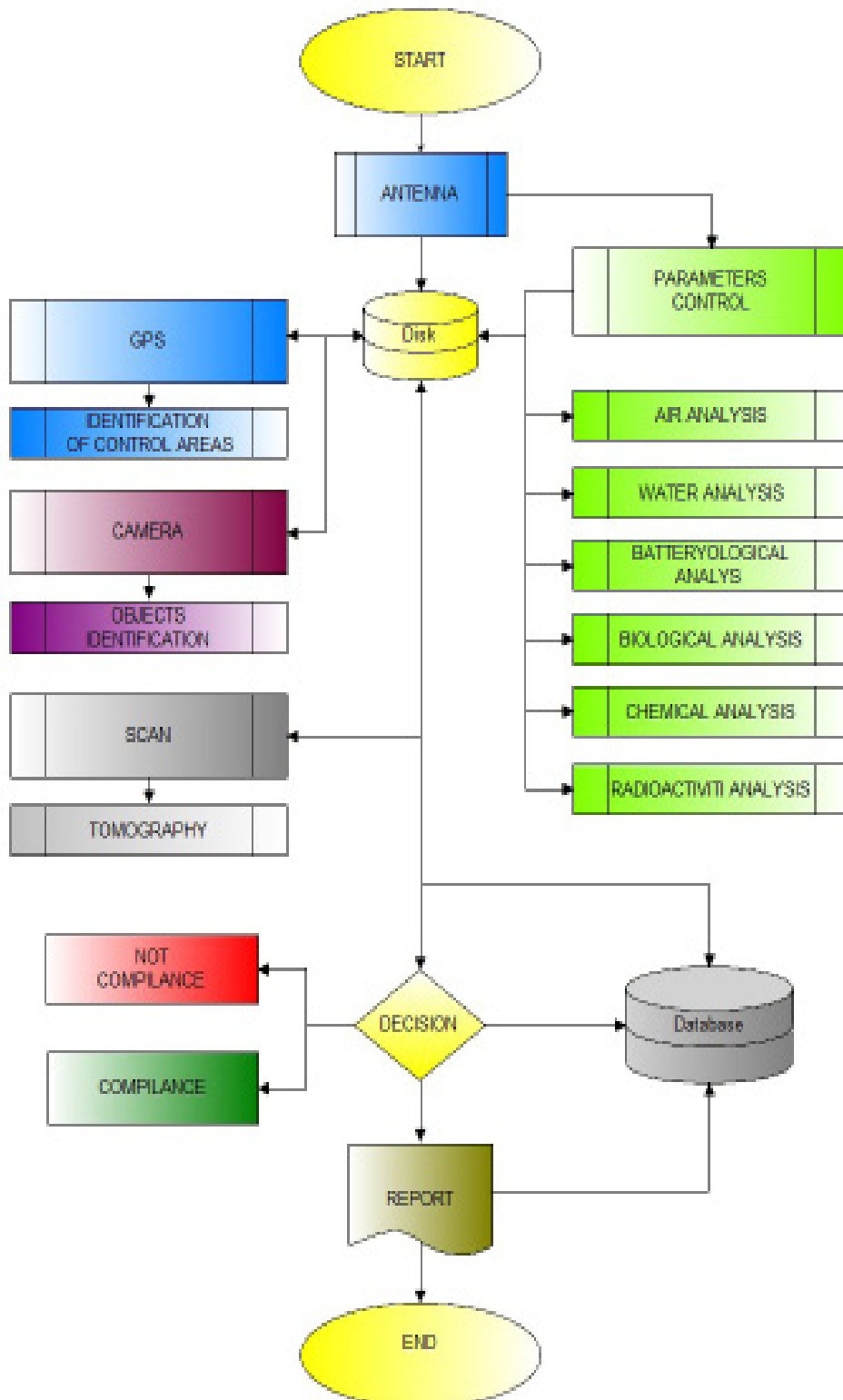
*Image  
Capture*



*Radioactivity  
Identification*



## Work Flow ACS Aislogic Chemical Scanner





# PROFLUID

## FLUID CONTROLLER

Liquid - Gas - Smoke

PROFLUID is a device optimized for fluid control application like : pools, watering plants and many other solutions

USES Single or combine

Chemical substance identification  
Measure chemical parameter

*Water / Liquid  
Inspection*



*Chemical  
Inspection*



*Scan*



*Air  
Inspection*



*Data  
Via Antenna*



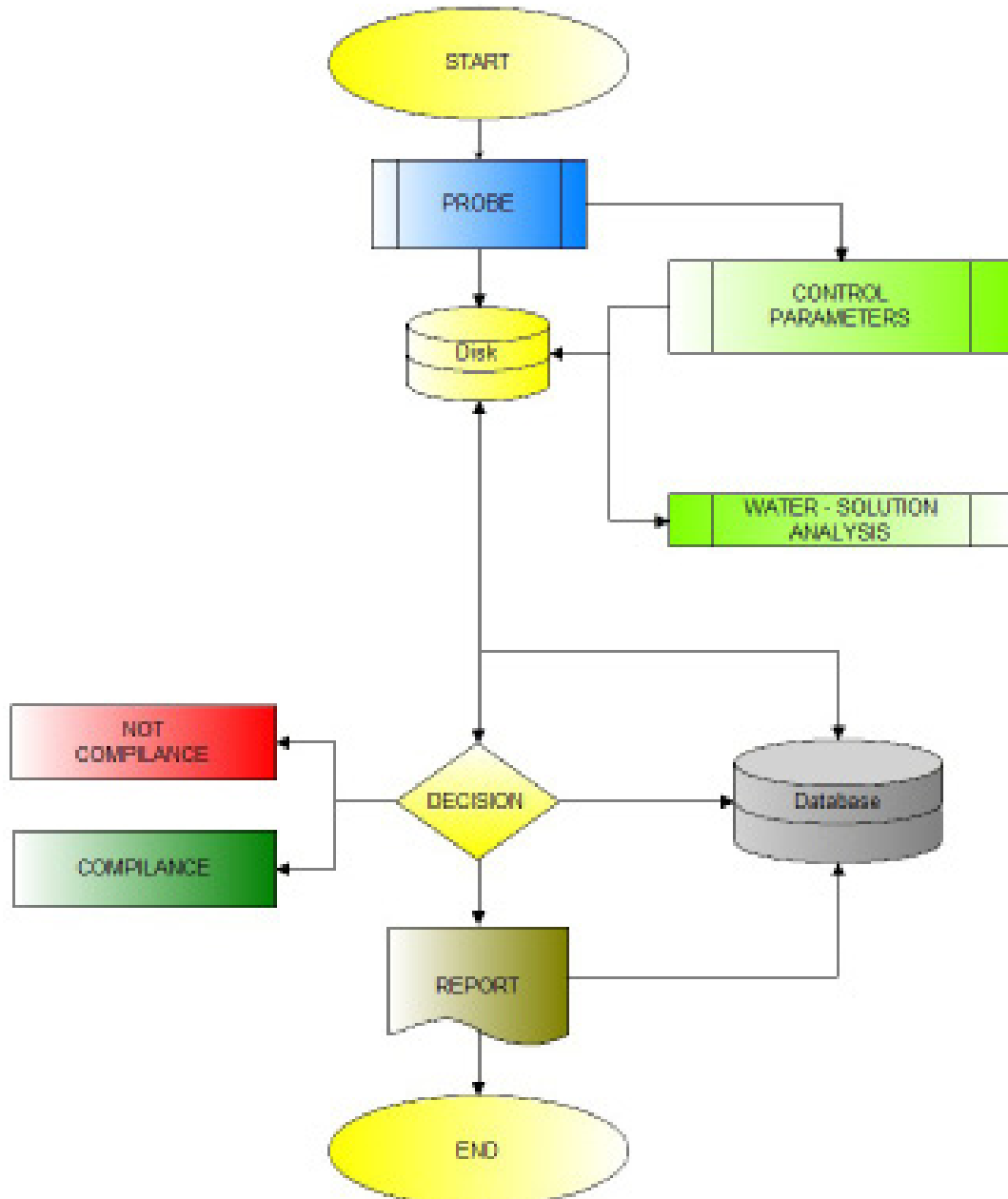
*Measures*



*Immersion  
Probe*



## Work Flow PROFLUID



# CHECKPRO

## ELECTROPLATING PROCES CONTROL

CHECPRO is an hardware module of Aislogic Vision System optimized for galvanic process control and quality check

USES Single or combine

- Identification of the piece before treatment
- Determination of the quality of the items before the process
- Control of electroplating process
- Determination of the quality of the worked items
- Identification of worked items.
- Print the quality tabs

Water / Liquid  
Inspection



Chemical  
Inspection



Scan



Galvanic  
Process



Data  
Via Antenna



Quality  
AQS



Measures



Image  
Capture



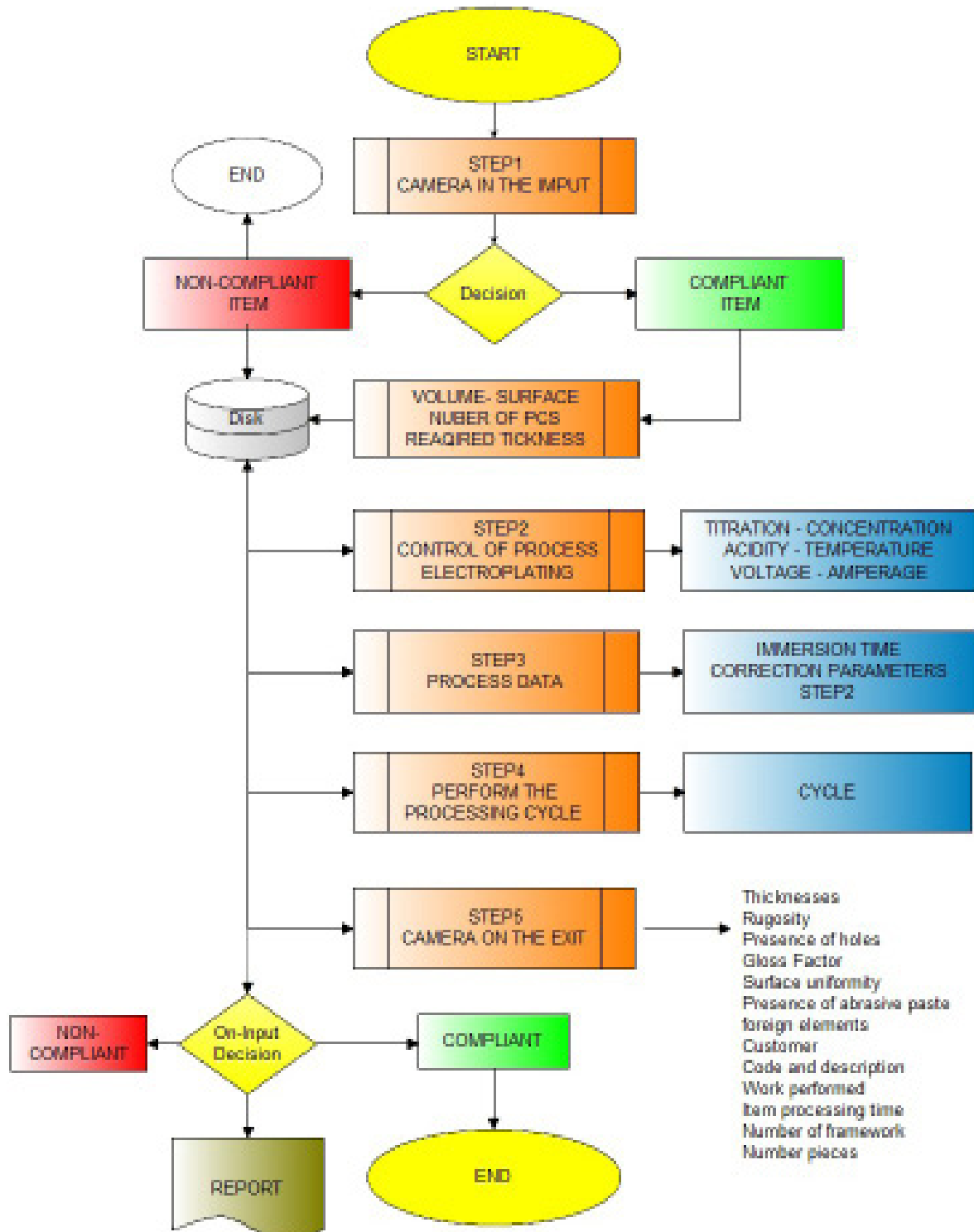
Items  
Identification



DRS



## Work Flow Electroplating Proces





# CHECKPRO

## COATING PROCES CONTROL

CHECPRO is an hardware module of Aislogic vision system optimized for coating process control and quality check

USES Single or combine

- Identification of the piece before treatment
- Determination of the quality of the items before the process
- Control of painting process
- Determination of the quality of the worked items
- Identification of worked items.
- Print the quality tabs

Water / Liquid  
Inspection



Chemical  
Inspection



Scan



Coating  
Process



Data  
Via Antenna



Quality  
AQS



Measures



Image  
Capture



Items  
Identification

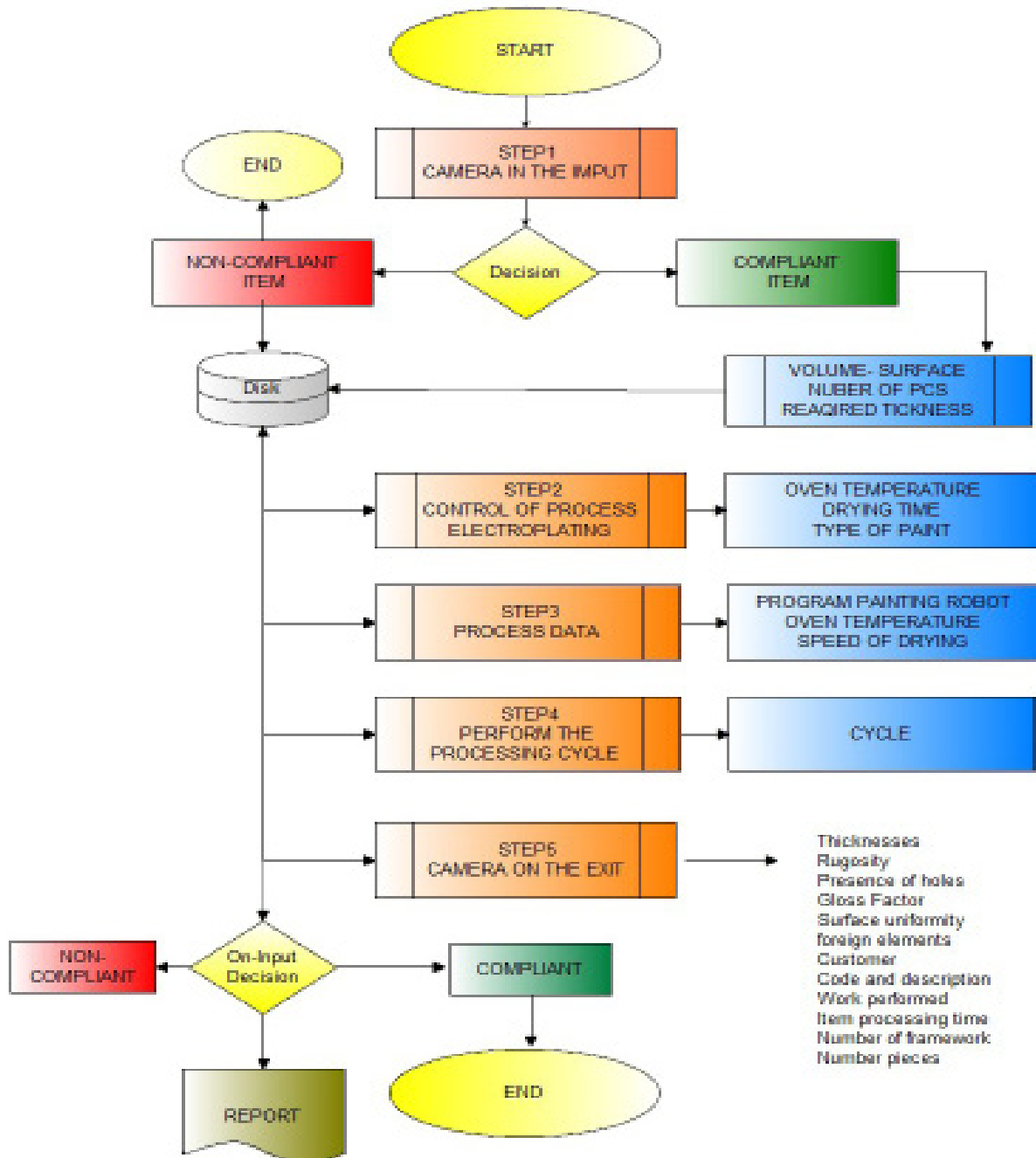


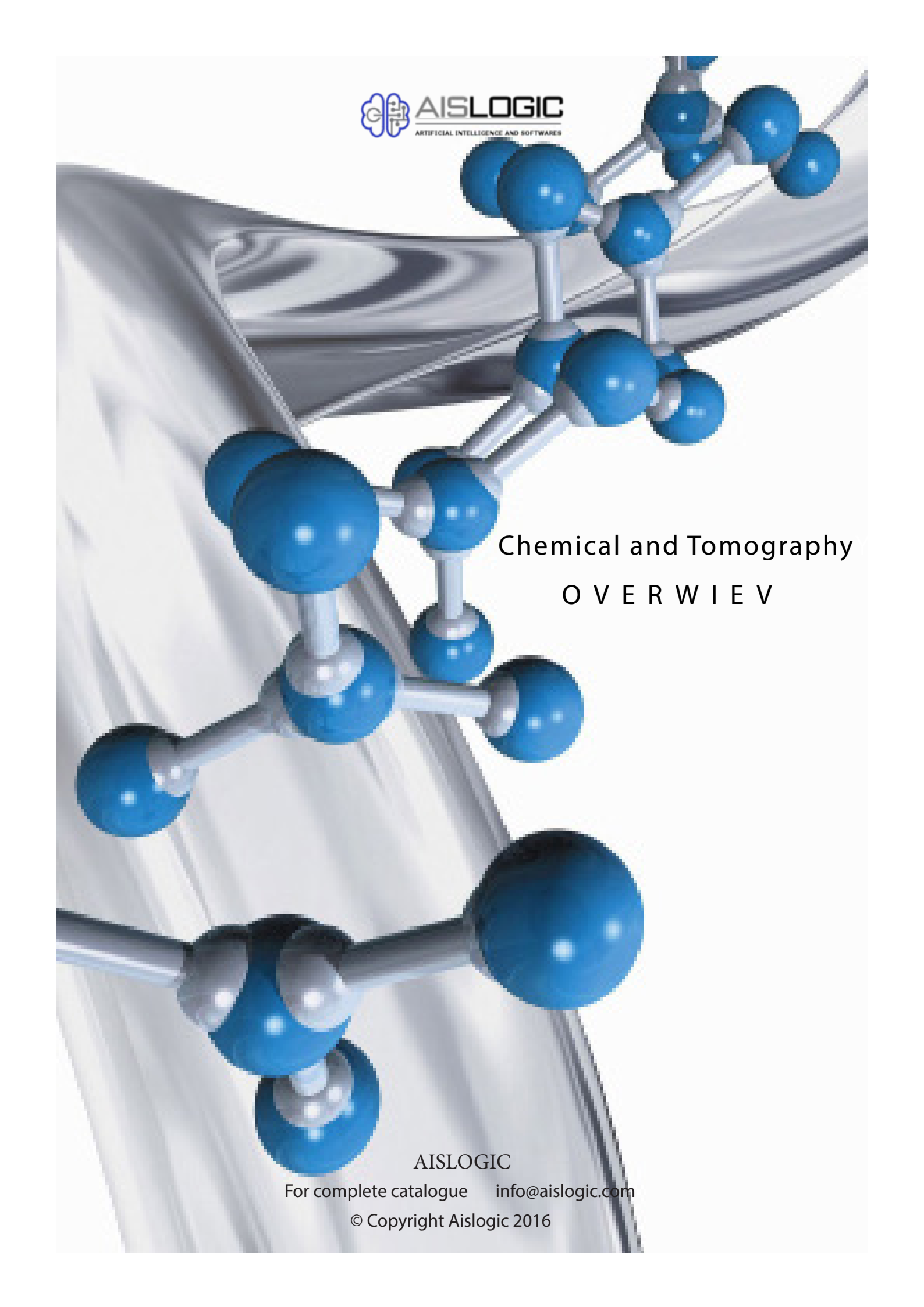
DRS





## Work Flow Coating Proces





Chemical and Tomography  
O V E R W I E W

AISLOGIC

For complete catalogue [info@aislogic.com](mailto:info@aislogic.com)

© Copyright Aislogic 2016